



# CAMSECURE CCTV SYSTEMS



[www.camsecure.co.uk](http://www.camsecure.co.uk)

## Streaming From Your PC Using Camsecure Streaming Audio and Video Services

By using the Camsecure live streaming services you can stream your live webcam to a great many people at the same time without worrying about the limitations of your own internet connection or the operating system. You can use many software encoders both free and commercial.

These instructions are for the mini live server program which runs as a service and connects to Camsecure media servers while running in the background on a Windows PC.

There are no time limits for the duration a viewer spends viewing the camera and no per hour extra charges either.

### Getting Started

Make sure your webcam is installed first! First you need to download the latest live server program from the Camsecure website. This small server program runs as a service (in the background) so once its set up initially you don't need to go to it any more unless you want to stop it or to change any settings etc. As soon as the PC is booted up the server is running and handling your video feed and you can carry on using the machine for other tasks.

Download the live Server Configurator program from the link you received in your email, or type it in from here:- <https://camsecure.co.uk/files/Download/streaming/ULiveServer.zip>

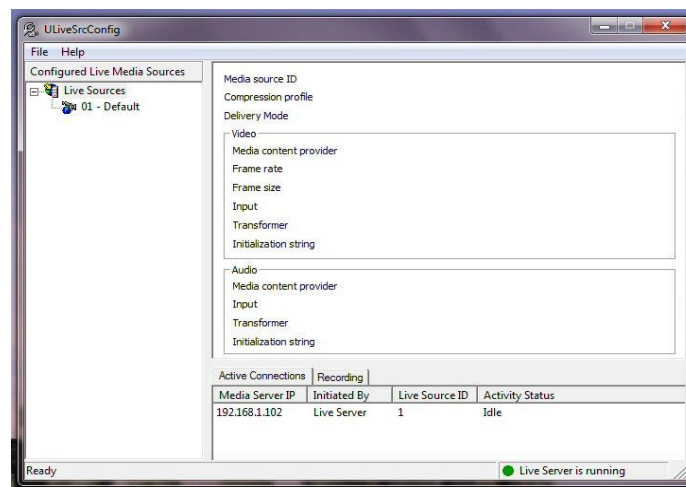
Once you have it double click it to extract the files.

Once extracted go the new folder it has just made for you and double click ULiveServer.msi

This will start to install the program for you and may take a little while.

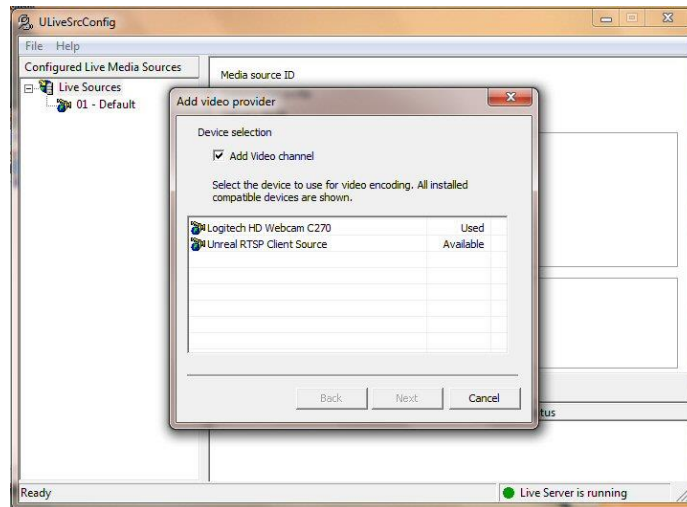
Follow all the usual prompts and agree to the terms etc. to complete installation.

Once installed close all the windows and go to Start and Programs and look for the new folder Unreal Streaming. Open this folder and click on the Live Server Configurator program to start it.

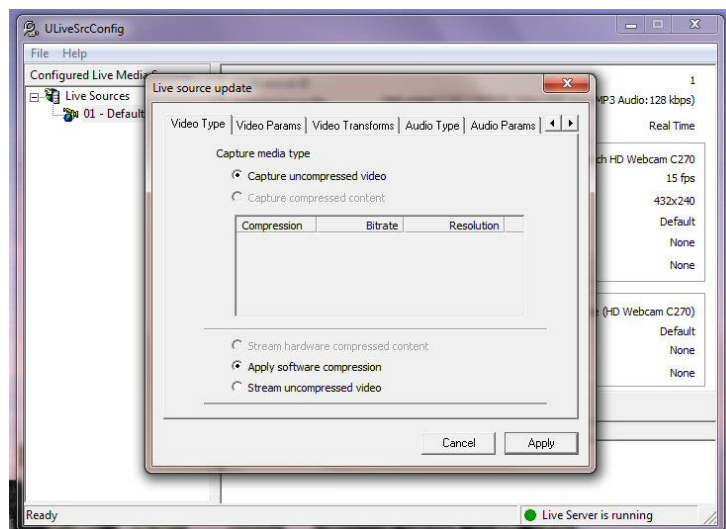


When you see this window right click on "01-default" and then click on update and the live source update screen appears. If you only have 1 Webcam connected then this will be chosen automatically. If you have more than 1 live source or the machine detects extra hardware that could be used as a live

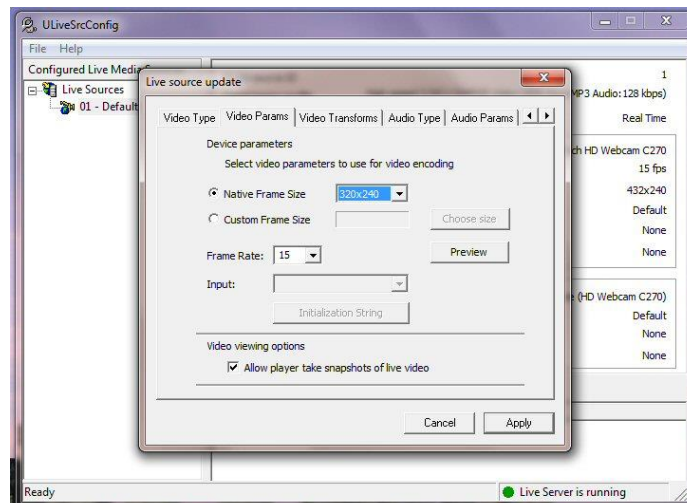
source then you will need to choose the source you want from a list before moving on as shown on the screen below. (Also see adding a new source).



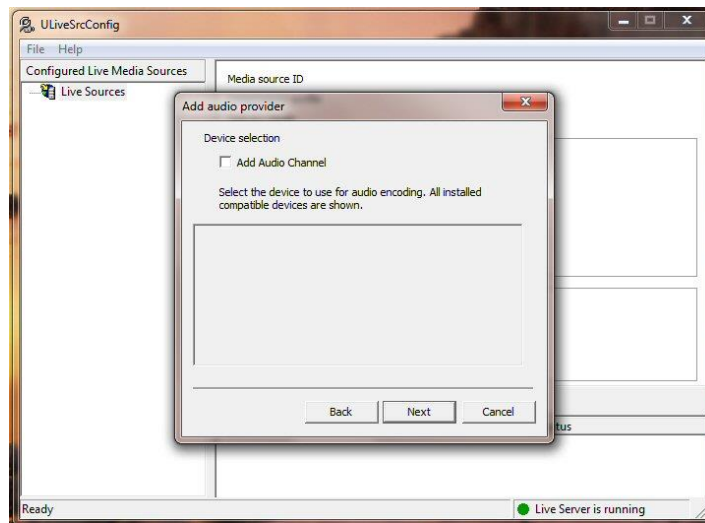
Select the device video channel you want to use from the list of available devices and tick the box “Add Video Channel” then click Next to move on to the next screen as shown below.



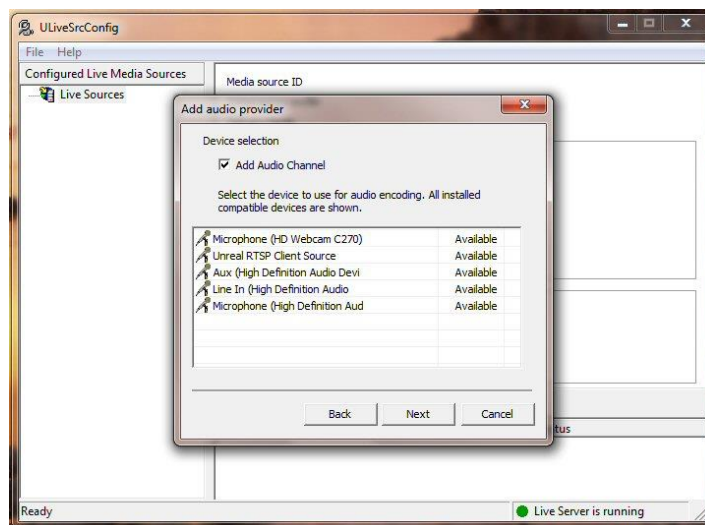
Click “Capture Uncompressed Video” and “Apply Software Compression” (don’t click apply yet) then click the “Video Params tab”. (Do this even if you have the option for hardware compression).



On the “Video Params” choose the frame size you want then 15 as frames per second. Next move on to the “Audio Params” tab and if you want to add audio to your stream tick the “Add Audio Channel” tab and click next. If you don’t want audio leave the box un-ticked.

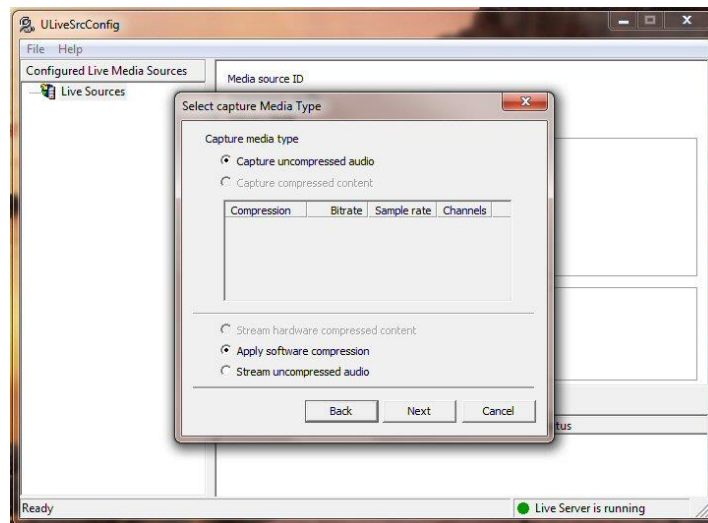


If you chose to add an audio channel you will next be shown a list of all available audio sources. These will include the audio inputs on the PC plus the any microphones on webcams or other USB devices. This is especially useful if you need to add a high quality microphone or other audio source to your feed as this can be connected to one of your PC digital audio inputs.

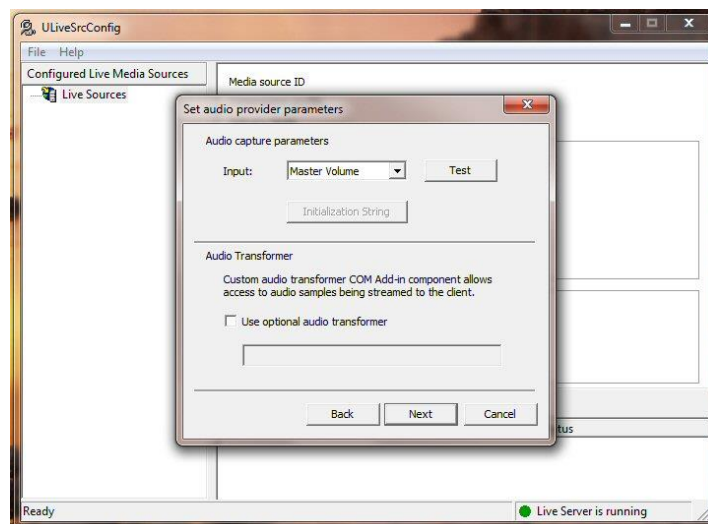


Click on the audio source you want to use with your chosen video source and then click Next.

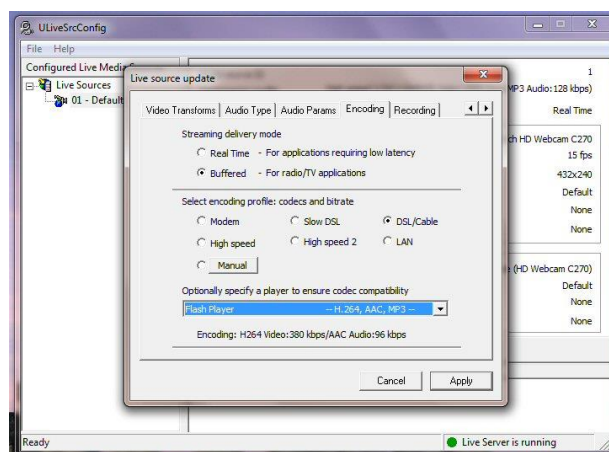
On the next screen ensure to select “Capture uncompressed audio” and “Apply software compression”



Do this even if you have the option to enable hardware compression and then click next.



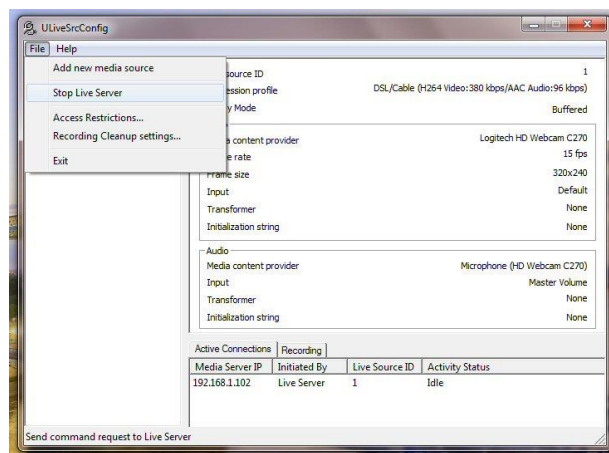
On the next screen you may wish to test the audio input operates correctly by playing it back through your PC loudspeakers. If so then click on “Test”. You may get a lot of feedback if the microphone is close to the speakers but this proves the microphone is working correctly. Testing is not compulsory and either way click Next to move on to the next screen as shown below.



In the Encoding tab set Streaming Delivery mode to “Buffered”, select “DSL/Cable” and then select Flash Player from the player drop down menu. This is not the type of player that will be used but rather the format we need coming in from you. This ensures that H264 is sent to our servers and then we convert it to the formats needed for today’s computers and mobiles including HTML5 and then rebroadcast it to your web page in a cross browser compatible player. Once you have done this click Apply (if updating a source) or Next (if adding a new source).

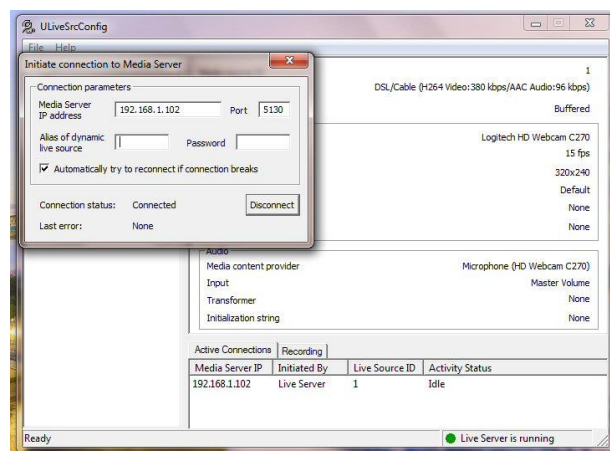
If you are adding a new source and clicked Next then you will see another screen asking for a Live Media Provider ID. Leave this as 1. Below you will see another box where you should enter the name of the source you are configuring e.g. “My Webcam” and this will be the name shown in your live source list. This is just for use as a reference in case you will be using more than 1 source.

After entering the source name a message will appear to tell you the changes will take effect once the server has been restarted.



Go to File and select Stop Live server. After a few seconds the server will stop and a red indicator will show on the bottom right of the program window. Then go to File and click Start Live Server. After a few seconds there will be a green indicator in place of the red one which shows the server is now running and all your settings have been set up correctly.

Now its time to connect the live server software to the Camsecure Media Hosting Servers.



Right click on 01 – Default (or your named device if you configured a new one) and select Connect To Media Server and the window shown above will appear.

Now enter the address of the Camsecure host you will be using in the box “Media Server IP address”, then the Alias of the source and finally your password. All of this will have been emailed to you along with these instructions. If you have lost them then just contact our support section to have them re-issued.

Once you have entered all the details, press return and the server may connect straight away. If not just press the connect button. If the status shows not connected but does not show a connect button, just press disconnect and the connect button will appear, then select connect.

After a few seconds the message “connected” should appear next to “connection status” and your done. The camera is now connected to the Camsecure servers. You can now close the program by clicking the red X at the top right of the window. The server will automatically run in the background and connect your camera all the time the PC is switched on.

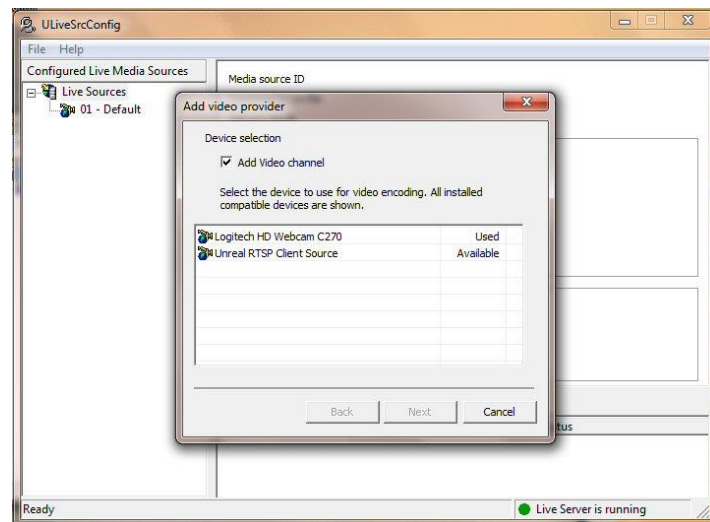
If you ever need to stop the camera then you must open the program again and right click on the 01 – default tab and click disconnect.

If you are sure that you have entered all the information correctly and the server still wont connect then you should try re-booting the computer as some times Windows wont fully accept a new service until a re-boot has occurred. If all else fails then please contact us.

### **Adding A New Source**

If you have ordered two or more plans then you may be wanting to stream more than 1 webcam from the same PC. Or you may want to be able to switch between 2 sources from time to time. Or you may just need to choose which single source you will use from a selection of devices on the same machine.

Which ever case you will need to add a new media source. If you have multiple sources the window below will appear when you start to configure the software. If you are adding an additional source, right click on “Live Sources” then “Add New Media Source” and the window below will appear.



In the device selection window will be a list of devices connected to your PC. Select which device and follow the instructions as before to configure it. Repeat this for each new device you have.

If you have multiple plans you can connect multiple devices simultaneously and stream them all as required.

### **Website Access**

Along with your connection details you will have received the code you need for your own web page. Just copy this code and paste it into your own web page where you want the live camera to appear.

The player is cross browser compatible and will also run fine on mobile devices. We also do a very low latency player on special request, this has very low latency but is not as cross browser friendly – so for most uses the cross browser player is used.

### **Additional Help**

If you need additional help getting your stream visible on the Internet please contact us and we will be happy to help.

If you are contacting us please ensure that the email address [camsecure@camsecure.co.uk](mailto:camsecure@camsecure.co.uk) is in your “allowed contacts” list otherwise our replies may end up in your SPAM or Trash box.

Thank you for shopping with Camsecure

We really do appreciate your business.

*Camsecure Team*